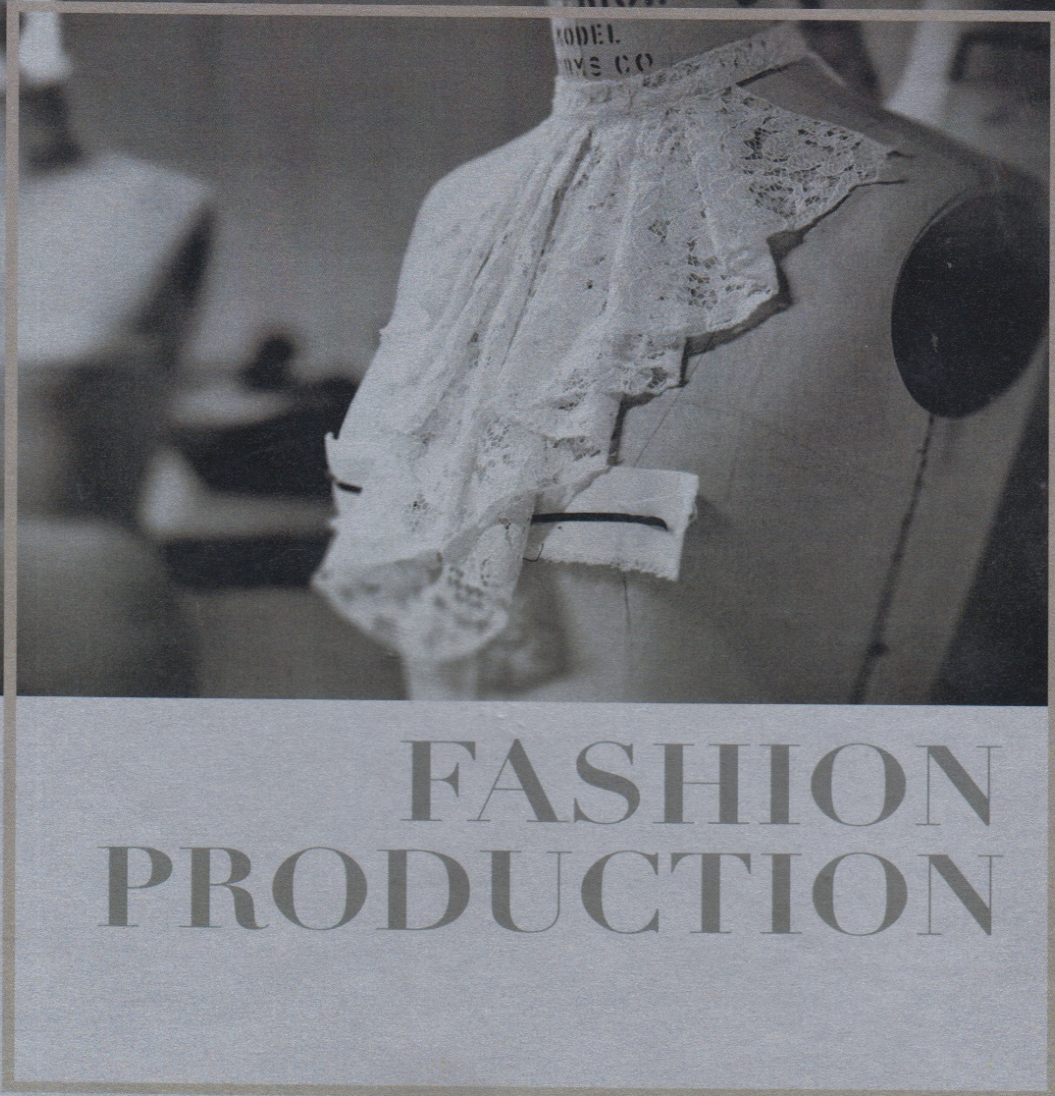


COVER



LaSalle College



# FASHION PRODUCTION

INSIDE COVER 1

# FASHION PRODUCTION

INSIDE COVER 2

# FASHION PRODUCTION

By Shinta Djiwatampu

LaSalle College Jakarta Fashion Design Program Director



LaSalle College Jakarta Press  
Jakarta, Indonesia

Copyright 2018 by Lasalle College Jakarta Press  
First Published in 2018 in Jakarta  
Lasalle College Jakarta Press  
Sekolah Tinggi Desain Lasalle  
Alamat: Sahid Office Boutique Unit D - F,  
Komp. Hotel Sahid Jaya, Jl. Jend. Sudirman Kav. 86,  
RT.10/RW.11, Karet Tengsin, Jakarta Pusat, 10220  
Tel: +62-21-57851819

ISBN : ( Still Process )

ISBN : ( Still Process )

**10 9 8 7 6 5 4 3 2 1**

**Author** : Shinta Djiwatampu  
**Publisher** : Lasalle College Jakarta Press  
**Layout** : Go Hendy Prakasa  
**Language** : English

Lasalle College Jakarta Press  
Sekolah Tinggi Desain Lasalle  
Alamat: Sahid Office Boutique Unit D - F,  
Komp. Hotel Sahid Jaya, Jl. Jend. Sudirman Kav. 86,  
RT.10/RW.11, Karet Tengsin, Jakarta Pusat, 10220  
[www.lasallecollege.ac.id](http://www.lasallecollege.ac.id)

Printed in Jakarta

All rights reserved. No part of book may be used or reproduced in any manner whatsoever without written permission except in the case of brief quotations embodied in critical articles and reviews.

Lasalle College Jakarta Press affirms that it possesses all the necessary rights for the publication of this material and has duly paid all royalties related to the authors' and photographers' rights. Lasalle College Jakarta Press also affirms that it has violated no property rights and has respected common law, all authors' rights and other rights that could be relevant. Finally, Lasalle College Jakarta Press affirms that this book contains no obscene nor slanderous material. Whole or partial reproduction of this book without editor authorization infringes reserved rights; any utilization must be previously requested.



## Contents

Introduction to pattern drafting	i
Shape and design control	v
Introduction to pattern draping	viii
Introduction to sewing	x
Tools	xii
Standard measurement	xvi

### Level 1

#### Composition of Simple Garment

Standard human measurement	1
----------------------------	---

#### SKIRT

• Plan of the skirt block	2
• Skirt with fullness at the side seam	5
• A-line skirt	6
• Skirt with flares	7
• Princess line skirt	8
• Gored skirt with flares/A	9
• Gored skirt with flares/B	11
• Gored skirt with flares/C	12
• Identification of the skirt elements	13
• Identification of pattern elements	14
• Waistband	16
• Addition seam allowances	17

#### Pleats

• Skirt w/ CF inverted pleats	18
• Skirt w/ CF inverted pleats	19
• Skirt with inverted pleats [ 3 pieces ]	20
• Skirt w/inverted pleats on princess seam	21
• Back skirt with slit	22
• Skirt with knife pleats	23

#### WOMEN BODICES

Plan of the bodice block	24
Armhole notches	29
Plan of sleeve block	30
Dart manipulation	33
Different types of block	
Block no.1	34
Block no.2	35
Block no.3	36
Dart less block	37
Back block	38
Sleeve for dartless block	39
Basic bodice	40
Pivoting	41
Pivoting of darts	42
Tucks, pleats, gathers and flare	43
Dart manipulations	44
Transferring dart to a style line	45
Yokes	47

#### NECKLINES & FACINGS

• Facing and necklines [in one piece]	48
• Facing and necklines [ separated piece ]	49
• Sleeve facings	50
• Buttonhole plans for center closing	51
• Placement of buttonholes on a skirt [Front Opening]	52

#### PANTS

• Plan of the men's pants block	53
• Plan of the woman's pants block	57
• Jogging pants	62

#### MEN BODICES

• Plan of the basic bodiceblock	64
• Plan of the basic sleeve block	67
• Kimono	70
• T-Shirt	73

#### OTHERS

• Plan of women's long torso block	76
• Flat head sleeve	78

### Level 2

#### Composition of Diverse Garment

• Full circular skirt	80
• ½ and ¼ circular skirt	81
• Circular skirt w/ geometric formula	79

#### SLEEVE

• Gathered sleeve /A	83
• Gathered sleeve/ B	84
• Gathered sleeve/C	85
• Sleeve with darted elbow	86
• Leg of mutton sleeve/A	87
• Leg of mutton sleeve/B	88

#### COLLARS

• Evolution of collar by construction	89
• Stand collar	90
• Open shirt collar	91
• Closed shirt collar	92
• Flat collar	93
• Semi rolled collar	94
• Semi rolled collar/shawl type	95
• Classic shawl collar	96
• Off the neck shawl collar	97
• Shawl collar [ wide]	99
• Tailored collar	100
• Tailored collar [ square neck]	101